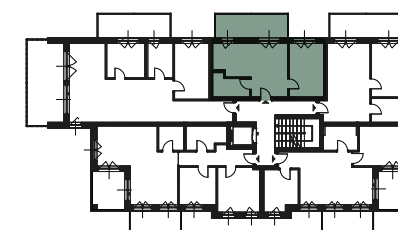
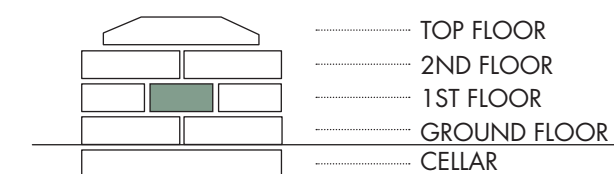


WOHNEN AM PARK

Next to Villa Auerheim



SURFACE AREA (NET)	38 m ²
TERRACE	12 m ²
CELLAR	6 m ²
TOTAL COMMERCIAL SURFACE*	60 m²

* The total commercial surface is made up of the net surface area including the walls and a percentage of terrace, garden, cellar and common areas.

A04 **2 ROOMS WITH TERRACE**